

The Impact of the New Normal on Workplace Privacy:

A Study of Business and IT Security Managers

Presented by Ponemon Institute, June 2021

PROBLEM:

Coffee shops and shared workspaces are the new “offices” for many remote workers, which is putting sensitive and confidential information at risk.

Employees working
remotely went from
24% to 65%
since COVID-19.

The Impact of the New Normal on Workplace Privacy: A Study of Business and IT and IT Security Managers
Presented by Ponemon Institute, June 2021. Sponsored by 3M.



PROBLEM:

In a remote working environment, organizations are losing control over the security of sensitive and confidential information.

65% of IT security managers
say it is easier to protect data
when employees are
working in the office.



The Impact of the New Normal on Workplace Privacy: A Study of Business and IT and IT Security Managers
Presented by Ponemon Institute, June 2021. Sponsored by 3M.

PROBLEM:

Remote workers' exposure of sensitive information on their screens is a significant concern.

64% of IT security managers
say they are very concerned that prying eyes will see
the sensitive information on remote workers' screens.

51% say their organizations
conduct training and awareness
programs that cover the remote
worker risk.

41% instituted new
mobile device policies.

40% say their organizations
require employees' home workspaces
to be private and not allow others to
be near the device.

PROBLEM:

Not only are business managers working in shared workspaces, but they also cannot keep prying eyes from seeing their work.

Only 34%
of business managers
said where they work at home
makes it possible for them
to prevent others, including
family members or
roommates, from seeing their
work.

The Impact of the New Normal on Workplace Privacy: A Study of Business and IT and IT Security Managers
Presented by Ponemon Institute, June 2021. Sponsored by 3M.



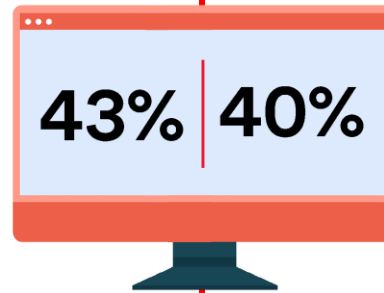
PROBLEM:

Employees are not concerned about visual hackers.

PROBLEM:

Their organizations aren't pressing the point enough.

Only 43%
of business managers
say they are concerned
when displaying
sensitive information
on their screen when
working remotely.



Only 40%
say their organization
has increased its
privacy policies since
more employees are
working remotely.

PROBLEM:
**Despite the prevalence of
working in open spaces...**

55%
of business managers
do not take steps
to prevent others from
viewing their screens.



If they do, **67%**
turn the screen

and **54%**
leave the room
with their devices.

The Impact of the New Normal on Workplace Privacy: A Study of Business and IT and IT Security Managers
Presented by Ponemon Institute, June 2021. Sponsored by 3M.

PROBLEM:
**The remote workforce is
experiencing health issues.**

On average
they are spending **44%**
more time in front of their device screen.

As a result, many remote
workers are experiencing
chronic neck and back pain (62%)
and headaches (54%).



The Impact of the New Normal on Workplace Privacy: A Study of Business and IT and IT Security Managers
Presented by Ponemon Institute, June 2021. Sponsored by 3M.

**DID YOU KNOW:
Remote workers would
like to return to the office.**

49% of remote workers
say their employers will expect
them to stay working remotely.



47%
would like to return to the office.



The Impact of the New Normal on Workplace Privacy: A Study of Business and IT and IT Security Managers
Presented by Ponemon Institute, June 2021. Sponsored by 3M.

**DID YOU KNOW:
Post COVID-19, the physical
workspace will be transformed.**

66%

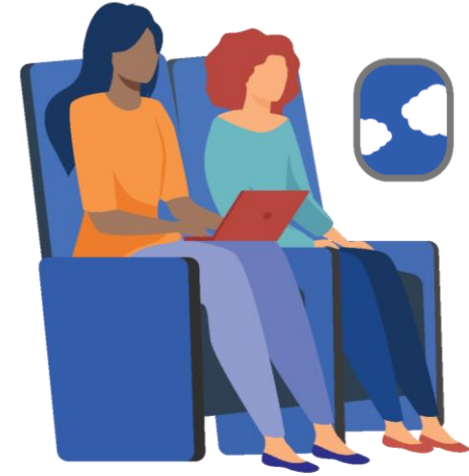
of IT security managers said more precautions will be taken to protect the health and safety of employees.



The Impact of the New Normal on Workplace Privacy: A Study of Business and IT and IT Security Managers
Presented by Ponemon Institute, June 2021. Sponsored by 3M.

**DID YOU KNOW:
Most respondents will be
comfortable traveling for
business post-COVID-19.**

Before COVID-19 51%
of respondents say they very
often traveled for business.



57%
will be very comfortable
traveling once again.

43%
say they are not comfortable due to:

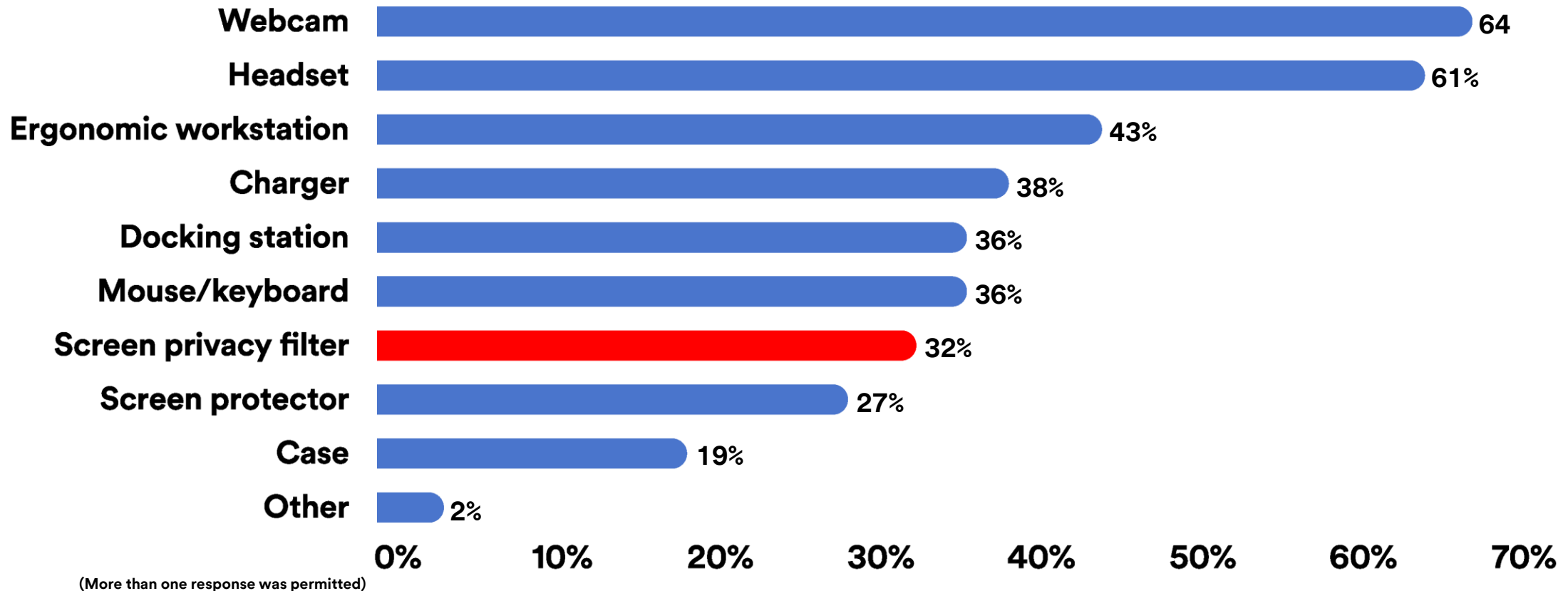
- unpleasantness of wearing a mask
- possibility of a mandate requiring vaccinations
- concern about becoming ill

The Impact of the New Normal on Workplace Privacy: A Study of Business and IT and IT Security Managers
Presented by Ponemon Institute, June 2021. Sponsored by 3M.

POLL:

What kind of accessories do you need for your primary device since starting to work remotely?

What kind of accessories do you need for your primary device since starting to work remotely?



Is your organization doing all it can?

Add 3M™ Privacy Filters to your IT data security plan.

Start with a Free Evaluation Kit: 3m.co.uk/evaluationkit

3m-privacy-sales@mmm.com

+44 (7805) 360036